



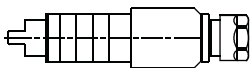
## NEXTURN

Models

**SA 20D/26D/32D**

NX.000.D

**AXIAL**

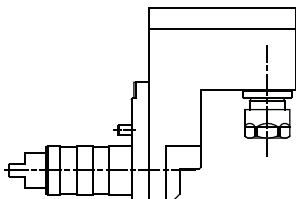


ER-16  
RATIO 1:1  
8.000 RPM MAX.



NX.011.D

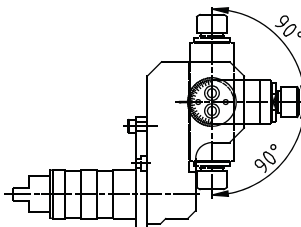
**RADIAL  
SET-BACK**



ER-16  
RATIO 1:1  
8.000 RPM MAX.

NX.021.D

**RADIAL  
ADJUSTABLE**

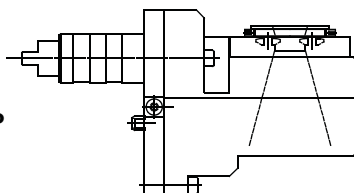


ER-11  
RATIO 1:1  
8.000 RPM MAX.



NX.035.D

**THREAD  
WHIRLING ± 15°**

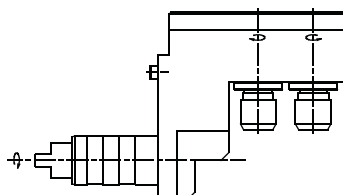


CUTTING HEAD  
RATIO 1:1  
5.000 RPM MAX.



NX.029.D2

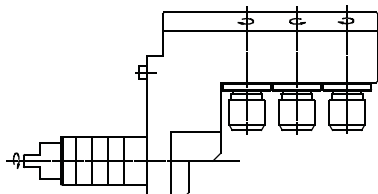
**RADIAL  
2 SPINDLES**



ER-16  
RATIO 1:1  
8.000 RPM MAX.

NX.029.D3

**RADIAL  
3 SPINDLES**



ER-16  
RATIO 1:1  
8.000 RPM MAX.



**SPECIALS: NO PROBLEM**





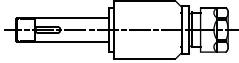
## NEXTURN

Models

**SA 20X/32X/45X**

NX.000.X

**AXIAL**

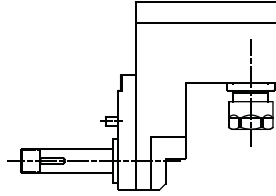


ER-16  
RATIO 1:1  
8.000 RPM MAX.



NX.011.X

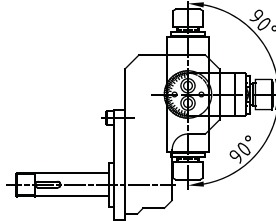
**RADIAL  
SET-BACK**



ER-16  
RATIO 1:1  
8.000 RPM MAX.

NX.021.X

**RADIAL  
ADJUSTABLE**

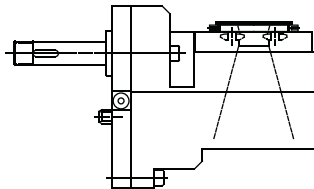


ER-11  
RATIO 1:1  
8.000 RPM MAX.



NX.035.X

**THREAD  
WHIRLING ± 15°**

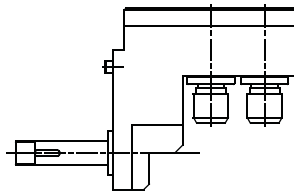


CUTTING HEAD  
RATIO 1:1  
5.000 RPM MAX



NX.029.X2

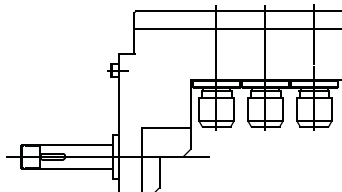
**RADIAL  
2 SPINDLES**



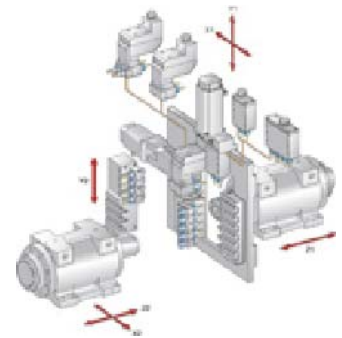
ER-16  
RATIO 1:1  
8.000 RPM MAX.

NX.029.X3

**RADIAL  
3 SPINDLES**



ER-16  
RATIO 1:1  
8.000 RPM MAX.



**SPECIALS: NO PROBLEM**





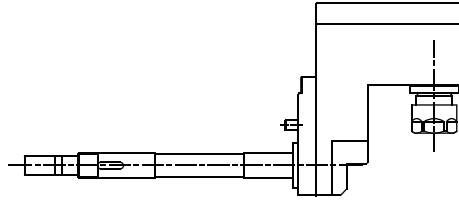
## NEXTURN

Models

**SA 20E/26E/32E/38E**

NX.011.EL

**RADIAL  
SET-BACK  
LONG**

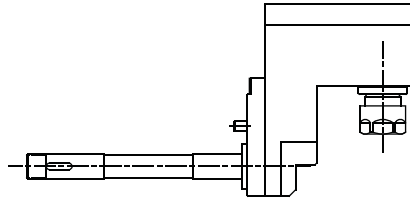


ER-16  
RATIO 1:1  
8.000 RPM MAX.



NX.011.ES

**RADIAL  
SET-BACK  
SHORT**

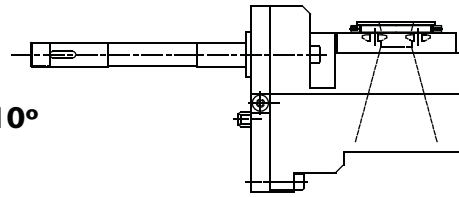


ER-11  
RATIO 1:1  
8.000 RPM MAX.



NX.035.E

**THREAD  
WHIRLING ± 10°**

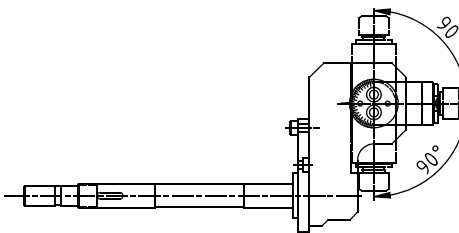


CUTTING HEAD  
RATIO 1:1  
5.000 RPM MAX.



NX.021.EL

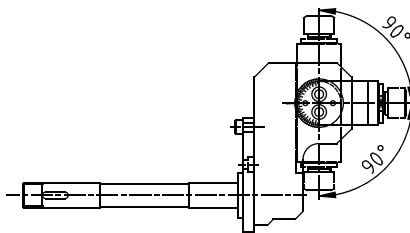
**RADIAL  
ADJUSTABLE  
LONG**



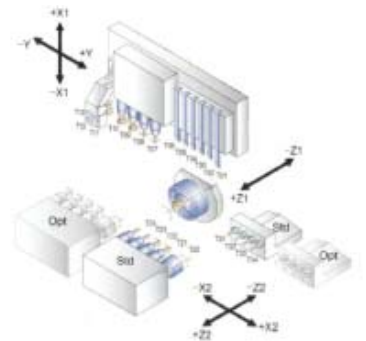
ER-11  
RATIO 1:1  
8.000 RPM MAX.

NX.021.ES

**RADIAL  
ADJUSTABLE  
SHORT**



ER-11  
RATIO 1:1  
8.000 RPM MAX.



**SPECIALS: NO PROBLEM**





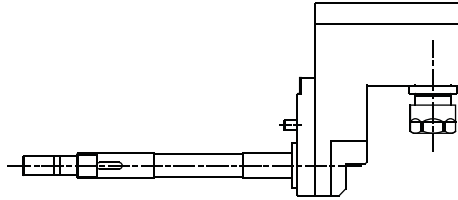
## NEXTURN

Models

**SA 12A/20A/18C**  
**SA 12B/20B/20LX**

NX.011.AL

**RADIAL  
SET-BACK  
LONG**

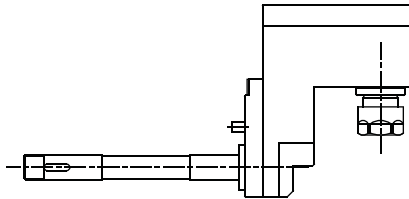


ER-16  
RATIO 1:1  
8.000 RPM MAX.



NX.011.AS

**RADIAL  
SET-BACK  
SHORT**

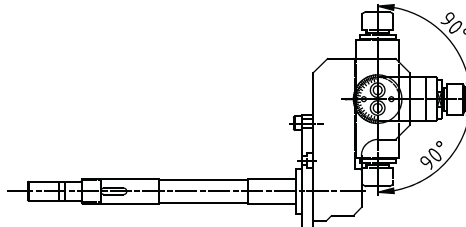


ER-16  
RATIO 1:1  
8.000 RPM MAX.



NX.021.AL

**RADIAL  
ADJUSTABLE  
LONG**

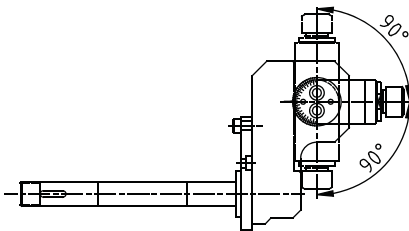


ER-11  
RATIO 1:1  
8.000 RPM MAX.

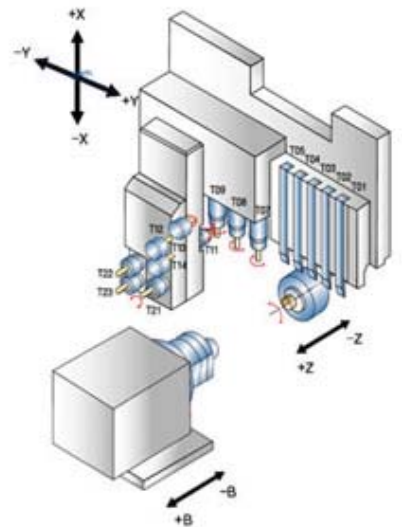


NX.021.AS

**RADIAL  
ADJUSTABLE  
SHORT**



ER-11  
RATIO 1:1  
8.000 RPM MAX.



**SPECIALS: NO PROBLEM**

